



Safe use of Gloves

REMEMBER:

GLOVES ARE NOT A SUBSTITUTE FOR HAND HYGIENE. HAND HYGIENE FIRST IN ALL CASES.



WHEN TO WEAR GLOVES

- When in contact with blood/bodily fluids, non-intact skin or mucous membranes.
- As required for transmission based precautions.
- When in contact with chemical hazards such as disinfectants, preserving agents or cytotoxic drugs.

WHEN NOT TO WEAR GLOVES

- Direct Patient Care: Taking blood pressure, temp, pulse etc.
- Indirect Patient Care: Giving oral medications, using the telephone etc.
- Where there is no potential for exposure with blood/bodily fluids or contaminated environment.
- In non-clinical settings.

SELECT THE CORRECT GLOVES FOR THE TASK

STERILE	NON-STERILE
Sterile Procedures	(Nitrile, Latex, Medical Vinyl) Potential for contact with infectious material

POINTS TO REMEMBER ABOUT WEARING GLOVES

DO:

- ✓ Clean hands before putting gloves on and after taking gloves off
- ✓ Clean hands and change gloves between tasks
- ✓ Ensure hands are thoroughly dried before putting on gloves to reduce risk of dermatitis
- ✓ Make sure the gloves fit you properly



DO NOT:

- ✗ Re-use or wash gloves
- ✗ Double-glove
- ✗ Use alcohol hand gel on gloves
- ✗ Use gloves if they are damaged or visibly soiled
- ✗ Touch your face when wearing gloves or other surfaces
- ✗ Wear the same gloves from one patient to another
- ✗ Wear gloves for a prolonged time

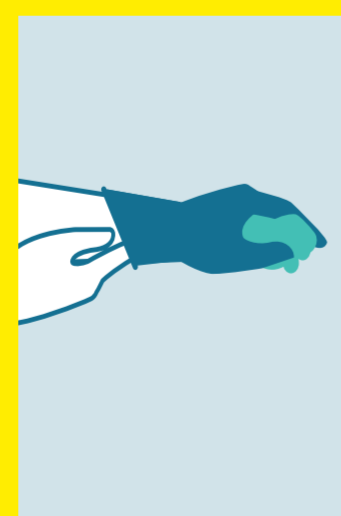
REMEMBER SAFE DOFFING OF GLOVES



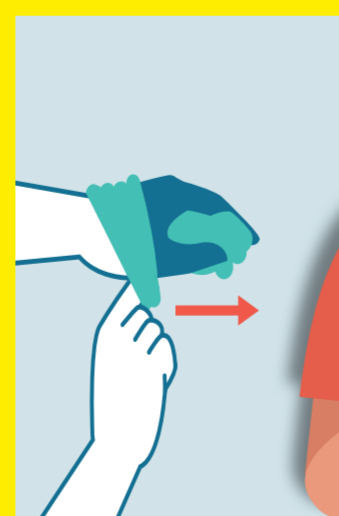
PEEL THE GLOVE AWAY FROM YOUR BODY, TURN IT INSIDE-OUT



HOLD THE INSIDE-OUT GLOVE IN THE OTHER HAND



SLIDE YOUR FINGERS UNDER THE WRIST OF THE OTHER GLOVE



PEEL THE GLOVE AWAY FROM YOUR BODY, TURN IT INSIDE-OUT, LEAVE THE FIRST GLOVE INSIDE THE SECOND

ENSURE HAND HYGIENE AFTER EVERY DOFFING OF GLOVES

...AND THEIR SAFE DISPOSAL

Dispose of gloves used for health or personal care in a healthcare risk waste bag.

IF HEALTHCARE RISK WASTE SERVICE IS NOT AVAILABLE:

The gloves, along with any other PPE used, need to be double-bagged and stored for 72hrs in a secure location, then put in the domestic waste.



Thanks to the IPC and Communications team in UL Hospitals Group for this poster.